

Farm Retirement

16030 448th Ave, Florence, SD 57235



Built on Trust.

AUCTION

TIMED ONLINE

Opens Monday, November 23

CLOSES: MONDAY, NOVEMBER 30 | 1PM 2020

PREVIEW: By appointment. No preview on Thanksgiving day.
LOADOUT: By appointment. All items must be removed by December 14, unless arrangements are made with Dave Wensing at 605.881.6876.

TRACTORS

1984 Versatile 835, 4WD, CAH, 855 Cummins, 12 spd. gear, 4 hyd., return flow, 18.4-38 dual tires, shows 9,550 hrs., S/N37694
1995 John Deere 7800, MFWD, CAH, 20F/20R PowrQuad, 3 hyd., return flow, 3 pt., top link, 540/1000 PTO, diff lock, joystick loader control, JD 740 Classic loader, quick attach 96" bucket w/5-prong grapple, front grill guard, front weight bracket, front fenders, 420/85R28 front tires, 20.8R38 rear band duals, 6,302 hrs., S/NRW7800H0133346

HARVEST EQUIPMENT

1997 John Deere 9600, CAH, 2WD, DAM, DAS, fore/aft, variable spd. feeder house, reverser, rock trap, 2 spd. cylinder, Maurer hopper ext., JD brown box, Y&M, Vittetoe spreader, chopper, 18.4R38 dual fronts, 14.9-24 rear tires, 2,166 sep. hrs., 3,345 engine hrs., S/NH09600X670727
John Deere 925 flex head, 25', DAS, hyd. fore/aft, finger reel, poly bottom, rock guards, S/NH000925F641139
John Deere 843 corn head, 8x30", Clark Machine conversion, poly snouts, knife rolls, crop shield, S/N 571333
John Deere 444 corn head, 4x36", steel snouts

GRAIN CART & GRAVITY BOXES

J&M 675-14 grain cart, 675 bu., 14" corner auger, hyd. fold auger, 1000 PTO, 30.5L-32 tires, S/N1671
Killbros 350 gravity box w/drill fill, Killbros 6" hyd. auger, LH delivery, Electric 5026 4-wheel running gear, rear hitch, 6-bolt rims, S/NC91493
Killbros 350 gravity box w/drill fill, 6" hyd. auger, LH delivery, 4-wheel running gear, adj. hitch, rear hitch, 11L-15 tires on 6-bolt rims, S/NC84028

PLANTER & EXTRA BOXES

1997 John Deere 1750 Conservation planter, 8x30", MaxEmerge Plus, Vacuometer, 3 bu. boxes, mechanical drive, Dawn screw adj. row cleaners, rubber closing wheels, double spring down pressure, hyd. markers, light package, fertilizer boxes w/single disc openers, corn/bean plates, John Deere monitor, row units calibrated & New openers in 2019, S/NH01750R671015
(8) John Deere 1.6 bu. boxes

TILLAGE EQUIPMENT

Leon 600 chisel plow, 25', 12" spacing, 2" points, Morris 3-bar harrow, S/N738-101
IHC 4600 Vibrashank field cultivator, 30', 7-1/2" sweeps, 6" spacing, walking tandems, Noble 3-bar harrow, 7.60-15 tires
(7) **Inland 4' harrow sections**, 3-bar
Lorenz Mfg. Wac-A-Track I track wacker, 3 pt. (3) S-tine shanks, S/N1886

SEMI TRACTOR & TRUCK

1992 White-GMC day cab, N14 Cummins, Eaton Fuller 9 spd., air ride seat & susp., cruise, diff lock, dual fuel tanks, SS half fenders, 154" WB, 11R22.5 tires, steel wheels, 744,428 miles, odometer not working
1975 Chevrolet C65 tandem tag, 427 V8 gas, 5&2 spd., spring suspension, air lift tag, 20'x8'x54", box, wood floor, roll tarp, 3 pc. end gate, twin ram hoist, air brakes, 11R22.5 front tires, 285/75R24.5 rear tires, all steel wheels, shows 92,122 miles, recent tune-up and air brake work, LH fuel tank disconnected

HOPPER BOTTOM TRAILER

1980 Fruehauf tandem axle hopper bottom trailer, 42'x96"x60", standard hoppers, 2 spd. traps, roll tarp, spring suspension, front & rear ladders/catwalks, 11R24.5 tires, steel wheels

SPRAYER & SPRAY ACCESSORIES

Blumhardt Trail Master II pull-type sprayer, 60' booms, 500 gal. poly tank, 20" spacing, single nozzle bodies, hyd. boom height, 3-section shut-off, 1000 PTO Hypro pump, foam markers, 2" fill, Blumhardt controller, radar, walking tandems, 9.5L-15 tires, New pump in 2019, S/N444800
1,500 gal. vertical poly tank, 30 gal. mixing cone, Briggs & Stratton XR950 gas motor, Pacer Pump, 2" plumbing

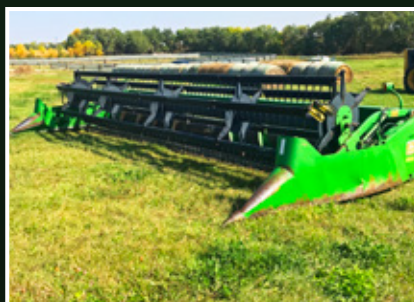
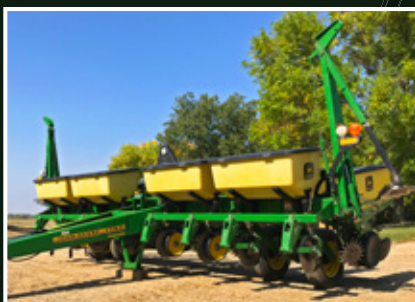
HAY EQUIPMENT

2006 John Deere 567 round baler, MegaWide pickup, Cover-Edge, net/twine wrap, hyd. lift pickup, bale pusher, rock curtains, monitor, small 1000 PTO, 31x13.50-15 tires, shows 11,199 bales, S/NE00567X326626
IHC 16 side delivery rake, LH delivery, ground drive



DAVE & JODI WENSING | Dave, 605.881.6876

or Kyle Waller at Steffes Group, 605.799.6261



712.477.2144 | SteffesGroup.com
Steffes Group, Inc., 1688 Hwy 9, Larchwood, IA 51241



TERMS: All items sold as is where is. Payment of cash or check must be made sale day before removal of items. Statements made auction day take precedence over all advertising. \$35 documentation fee applies to all titled vehicles. Titles will be mailed. Canadian buyers need a bank letter of credit to facilitate border transfer. Scott Steffes ND81, MN14-51; Brad Olstad ND319, MN14-70; Max Steffes ND999, MN14-031; Justin Ruth ND2019, MN14-041